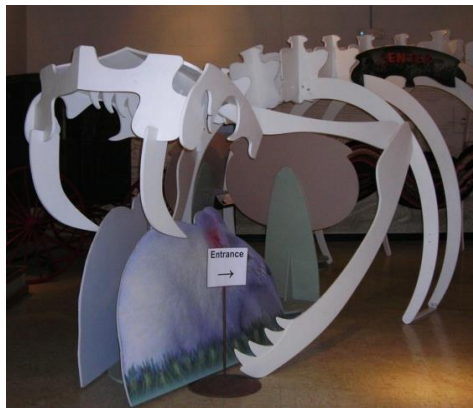




Check out the Exhibits!



The Forest Park Museums are filled with a variety of permanent and changing displays. View the Conestoga Wagon any time and make plans to visit the next time the walk-through snake is up!



From stone tools to quilts, a recreated blacksmith shop to classic cars, fancy hats to childrens' toys, there is always something to marvel at. Get face to face with a live snake, see a real mammoth tooth and bone, and compare the past to the present at the firearms display.



Get on the Trail.

With convenient parking and modern facilities, Forest Park is a great place to access the Raccoon River Valley Trail! Purchase your trail permit in the office during business hours or anytime by using the envelopes found in the yellow tube at the trail head. Trail maps are available by the Visitor Center entrance.



Other nearby Dallas County Conservation Board areas

- **North Raccoon River** Located about 2 miles west of Forest Park, the North Raccoon River runs around 185 navigable river miles from Sac County to the north down to its junction with the Des Moines River in downtown Des Moines. Several county-managed paved boat ramps with gravel parking areas are nearby.
 - * Perry Boat Ramp – just north of Hwy 141 at the west edge of town. Turn north on I Court, go 1 block to Willis, turn west.
 - * Spring Valley Boat Ramp – 4 miles south of Perry on P58/J Ave
- **Dawson Depot** 307 Railroad Ave., Dawson. A historic, restored Milwaukee line railroad depot, it serves as a Raccoon River Valley trailhead, meeting place and exhibit area. About 8 miles west of Perry via Highway 141, or 7 miles on the trail.
- **Voas Nature Area** Located 1.5 miles west of Highway 169 in Minburn, Voas features over 700 acres of restored wetlands, prairies and woodlands. Amenities include a geology museum, hiking trails, modern facilities and hunting in marked areas.

For more information about these or other DCCB areas, visit our website at www.conservation.co.dallas.ia.us or call (515) 465-3577.

